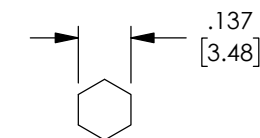


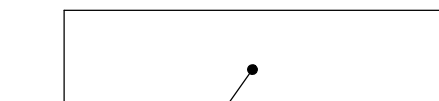
THE INFORMATION CONTAINED IN THIS DRAWING IS THE SOLE PROPERTY OF L-COM, INC. ANY REPRODUCTION IN PART OR WHOLE WITHOUT THE WRITTEN PERMISSION OF L-COM, INC. IS PROHIBITED.



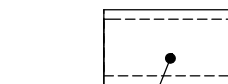
DESCRIPTION	MATERIAL	FINISH
BODY	BRASS	GOLD PLATE
OUTER CONTACT	BERYLLIUM COPPER	GOLD PLATE
INSULATOR	PTFE	-
INNER CONTACT	BRASS	GOLD PLATE
FERRULE	BRASS	GOLD PLATE
SPACER	ACETEL	-
CAP	BRASS	GOLD PLATE
SHRINK TUBE	PE	BLACK



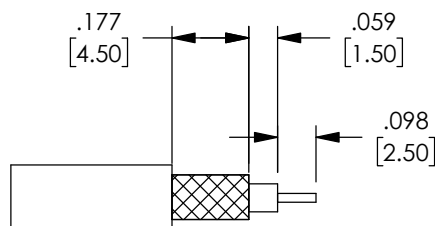
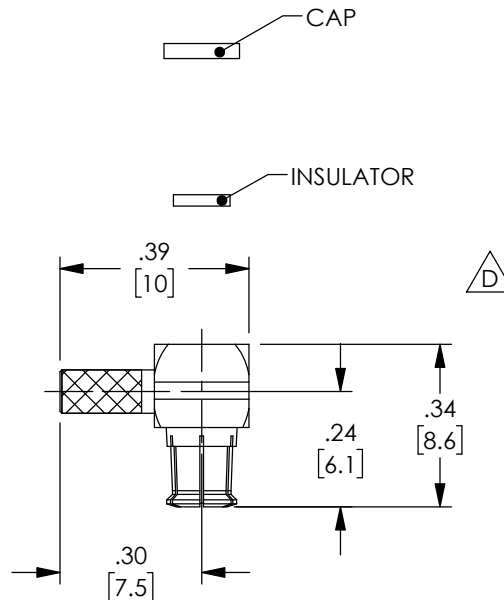
RECOMMENDED  
FERRULE CRIMP



HEAT SHRINK



FERRULE



RECOMMENDED  
CABLE STRIPPING

## NOTES:

### ELECTRICAL:

IMPEDANCE: 50 OHM

FREQUENCY RANGE: 0-6 GHz

VOLTAGE RATING:  $\geq 335$  V RMS

INSULATION RESISTANCE:  $\geq 1$  G $\Omega$

DIELECTRIC WITHSTANDING VOLTAGE: 750 V RMS

CONTACT RESISTANCE: CENTER CONTACT:  $\leq 5$  m $\Omega$

OUTER CONTACT:  $\leq 2.5$  m $\Omega$

### APPLICATION:

RG174, RG188, RG316, LMR100

-- ALL DIMENSIONS ARE FOR REFERENCE ONLY --

COMPONENT ASSEMBLY SHALL BE INDIVIDUALLY PACKAGED IN ACCORDANCE WITH L-COM SPECIFICATION PS-0031.

### REGULATORY COMPLIANCE:

CE2011/65/EU(RoHS DIRECTIVE)

REVISIONS			
REV	DESCRIPTION	DATE	APPROVED
A	INITIAL RELEASE	02/03/04	MCCORMICK
B	ECN# 2028 ADDED SHRINK TUBING AND INSULATOR	04/18/05	MCCORMICK
C	ECN 3155: UPDATE DWG FORMAT	1/18/08	D.GRIFFIN
D	ECN 9220: UPDATE TO NEW VENDOR SPEC SHEET	5/29/18	D.FRISIELLO

UNLESS OTHERWISE SPECIFIED, DIMENSIONS ARE IN INCHES [mm] OVERALL CABLE LENGTH TOLERANCE: $\leq 12$ [305] = +1 [25] / -0 $>12$ [305] $\leq 60$ [1524] = +2 [51] / -0 $>60$ [1524] $\leq 120$ [3048] = +4 [102] / -0 $>120$ [3048] $\leq 300$ [7620] = +6 [152] / -0 $>300$ [7620] = +5% / -0% ALL OTHER DIMENSIONAL TOLERANCES: .X = $\pm .2$ [5.08] .XX = $\pm .02$ [51] .XXX = $\pm .005$ [13] PROJECTION 	APPROVALS	DATE	 50 HIGH STREET NORTH ANDOVER, MA 01845
	DRAWN BY C.MCCORMICK	02/03/2004	
	CHECKED BY D.PARHAM	02/03/2004	
	APPROVED BY R.CARRICK	02/03/2004	
CONFIGURATION DETAILS OF UNDIMENSIONED FEATURES MAY VARY			CATEGORY COAXIAL
COLOR VARIATIONS MAY OCCUR			PRODUCT DESCRIPTION MCX RA CRIMP PLUG RG174/188/316
SCALE: NONE		CAD FILE: BAC508.SLDDRW	SHEET 1 OF 1