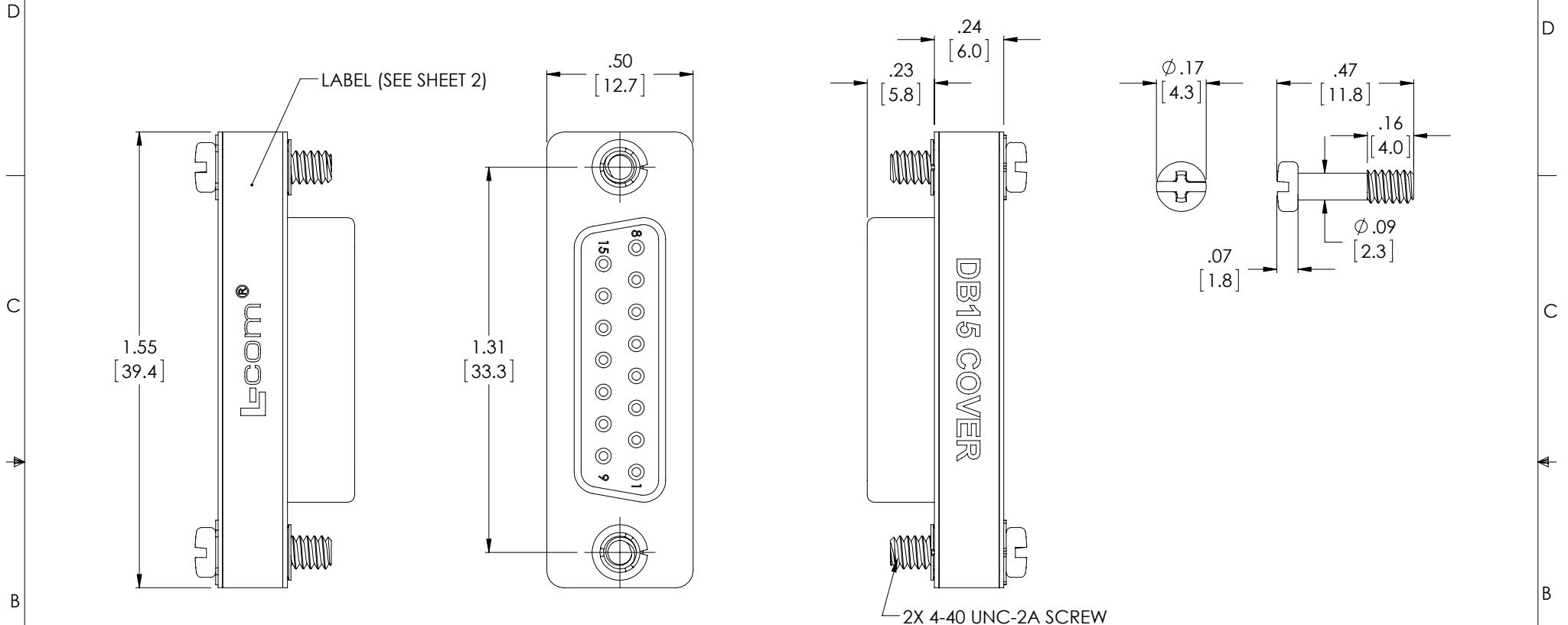


THE INFORMATION CONTAINED IN THIS DRAWING IS THE SOLE PROPERTY OF L-COM, INC. ANY REPRODUCTION IN PART OR WHOLE WITHOUT THE WRITTEN PERMISSION OF L-COM, INC. IS PROHIBITED.

REVISIONS			
REV	DESCRIPTION	DATE	APPROVED
A	INITIAL RELEASE	10/28/13	D.GRIFFIN



#### NOTES:

#### MATERIALS:

SHELL: NICKEL PLATED, COLD ROLLED STEEL  
COVER: NICKEL PLATED, COLD ROLLED STEEL  
INSULATOR: PBT GLASS FIBER REINFORCED UL94-V0, BLACK

#### APPLICATION:

COVER FITS STANDARD 15-CONTACT MALE D-SUBMINIATURE PLUG.

#### MISCELLANEOUS:

COMPONENT SHALL BE INDIVIDUALLY PACKAGED IN ACCORDANCE WITH L-COM SPECIFICATION PS-0031.

ALL DIMENSIONS ARE FOR REFERENCE ONLY.

#### REGULATORY COMPLIANCE:

CE2011/65/EU (RoHS DIRECTIVE)

UNLESS OTHERWISE SPECIFIED, DIMENSIONS ARE IN INCHES [mm] OVERALL CABLE LENGTH TOLERANCE: ≤12 [305] = +1 [25] / -0 >12 [305] ≤60 [1524] = +2 [51] / -0 >60 [1524] ≤120 [3048] = +4 [102] / -0 >120 [3048] ≤300 [7620] = +6 [152] / -0 >300 [7620] = +5% / -0% ALL OTHER DIMENSIONAL TOLERANCES: .X = ±.2 [5.08] .XX = ±.02 [51] .XXX = ±.005 [13] PROJECTION 	APPROVALS	DATE	 45 BEECHWOOD DRIVE NORTH ANDOVER, MA 01845
	DRAWN BY D. DESJARDIN	8/29/13	
	CHECKED BY D. PARHAM	8/29/13	CATEGORY
	APPROVED BY S. SMITH	10/28/13	PRODUCT DESCRIPTION
CONFIGURATION DETAILS OF UNDIMENSIONED FEATURES MAY VARY		D-SUBMINIATURE	
COLOR VARIATIONS MAY OCCUR		COVER, FOR DB15M SHLD	
SIZE <b>A</b>	FSCM NO. <b>43321</b>	DWG. NO. <b>DML015P</b>	REV. <b>A</b>
SCALE: NONE	CAD FILE: DML015P.SLDDRW	SHEET 1 OF 2	

THE INFORMATION CONTAINED IN THIS DRAWING IS THE SOLE  
PROPERTY OF L-COM, INC.. ANY REPRODUCTION IN PART OR WHOLE  
WITHOUT THE WRITTEN PERMISSION OF L-COM, INC. IS PROHIBITED.

D

C

B

A

**LABEL SPECIFICATION:**

BACKGROUND: PANTONE 2945 BLUE

"L-COM" LOGO: HEIGHT = .085"

"DB15 COVER" FONT: ARIAL BOLD - HEIGHT = .075"

TEXT COLOR: WHITE

DB15 COVER

Lcom®

3.58  
[91.0]

.20  
[5.0]



45 BEECHWOOD DRIVE  
NORTH ANDOVER, MA  
01845

CATEGORY

D-SUBMINIATURE

PRODUCT DESCRIPTION

COVER, FOR DB15M SHLD

SIZE  
**A**

FSCM NO.  
**43321**

DWG. NO.  
DML015P

REV.  
**A**

SCALE: NONE

CAD FILE: DML015P.SLDDRW

SHEET 2 OF 2