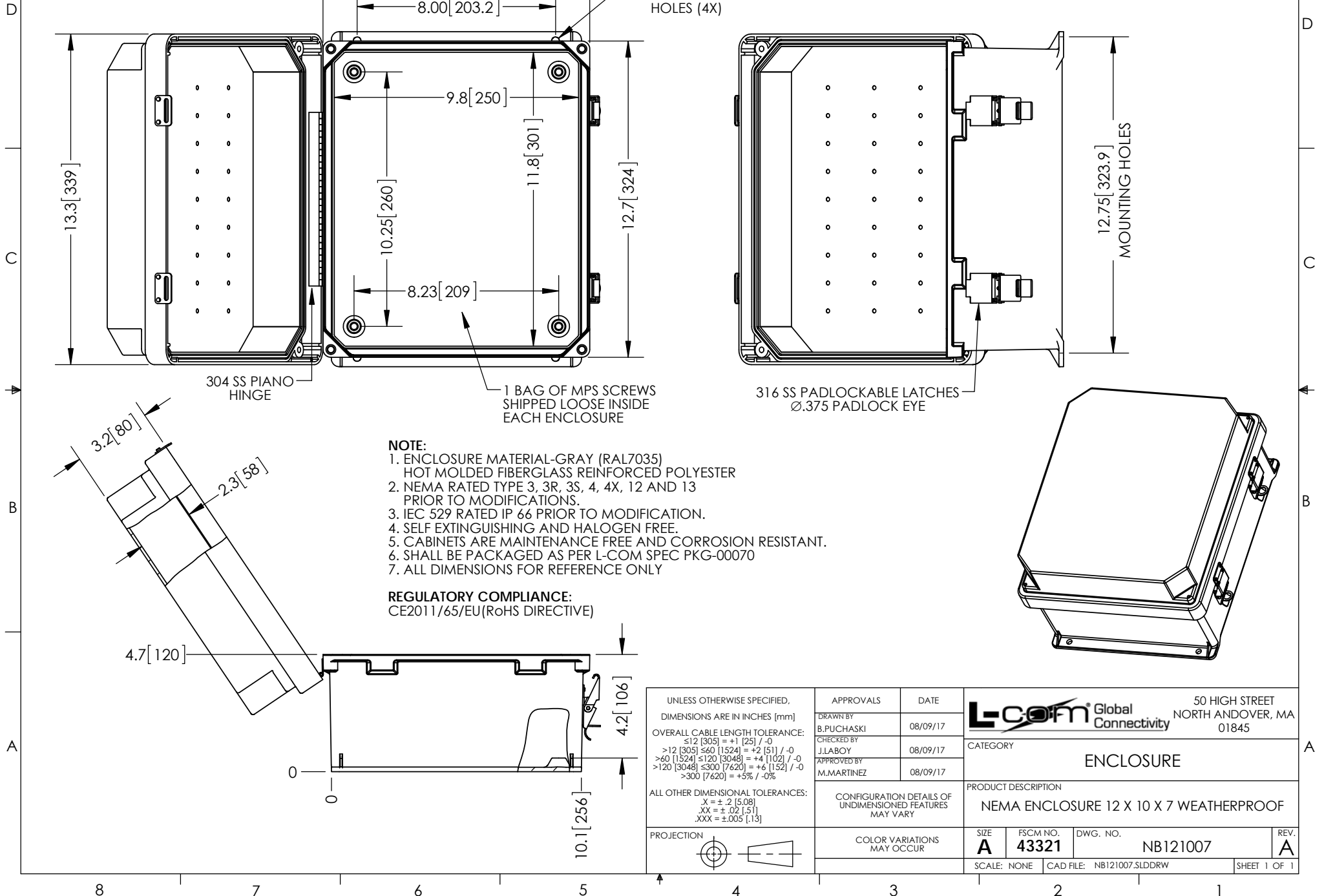

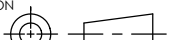


THE INFORMATION CONTAINED IN THIS DRAWING IS THE SOLE PROPERTY OF L-COM, INC. ANY REPRODUCTION IN PART OR WHOLE WITHOUT THE WRITTEN PERMISSION OF L-COM, INC. IS PROHIBITED.

REVISIONS			
REV	DESCRIPTION	DATE	APPROVED
A	INITIAL RELEASE	08/09/17	B.PUCHASKI



UNLESS OTHERWISE SPECIFIED, DIMENSIONS ARE IN INCHES [mm] OVERALL CABLE LENGTH TOLERANCE: ≤12 [305] = +1 [25] / -0 >12 [305] ≤60 [1524] = +2 [51] / -0 >60 [1524] ≤120 [3048] = +4 [102] / -0 >120 [3048] ≤300 [7620] = +6 [152] / -0 >300 [7620] = +5% / -0% ALL OTHER DIMENSIONAL TOLERANCES: .X = ±.2 [5.08] .XX = ±.02 [51] .XXX = ±.005 [13]	APPROVALS		DATE		<div>Global Connectivity</div> <div>50 HIGH STREET NORTH ANDOVER, MA 01845</div>	
	DRAWN BY B.PUCHASKI		08/09/17			
	CHECKED BY J.LABOY		08/09/17			
	APPROVED BY M.MARTINEZ		08/09/17			
PROJECTION 	CONFIGURATION DETAILS OF UNDIMENSIONED FEATURES MAY VARY		ENCLOSURE			
	COLOR VARIATIONS MAY OCCUR		PRODUCT DESCRIPTION NEMA ENCLOSURE 12 X 10 X 7 WEATHERPROOF			
			SIZE A	FSCM NO. 43321	DWG. NO. NB121007	REV. A
			SCALE: NONE		CAD FILE: NB121007.SLDDRW	SHEET 1 OF 2