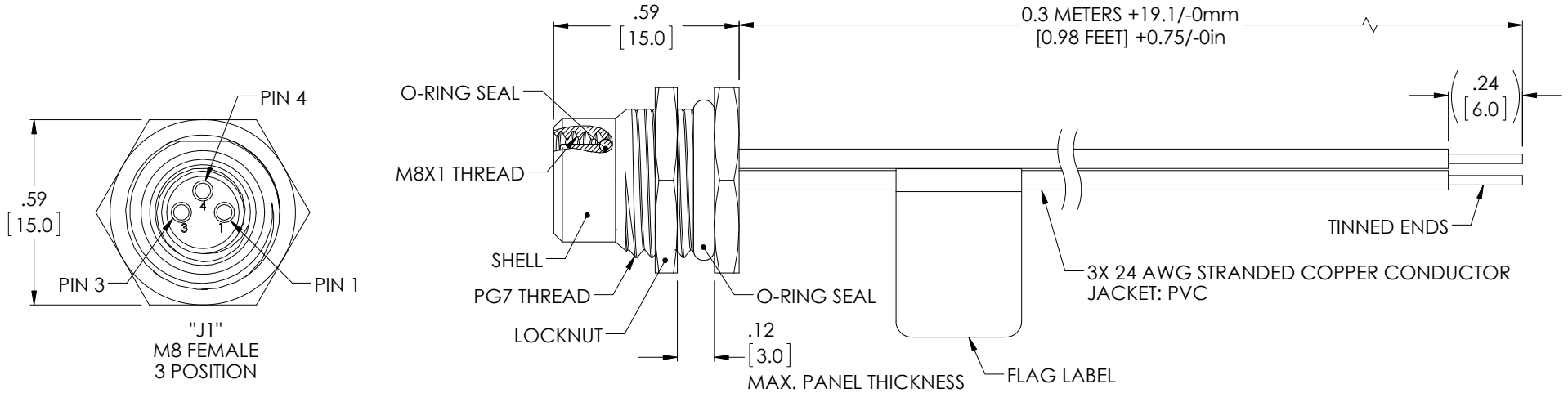


THE INFORMATION CONTAINED IN THIS DRAWING IS THE SOLE PROPERTY OF L-COM, INC. ANY REPRODUCTION IN PART OR WHOLE WITHOUT THE WRITTEN PERMISSION OF L-COM, INC. IS PROHIBITED.

REVISIONS			
REV	DESCRIPTION	DATE	APPROVED
A	INITIAL RELEASE	4/22/16	D.GRIFFIN



NOTES:

MATERIAL:

INSULATOR: PUR, BLACK
CONTACTS: COPPER ALLOY, GOLD OVER NICKEL PLATE
COUPLING NUT: BRASS, NICKEL PLATE

ELECTRICAL:

NOMINAL VOLTAGE RATING: 60VAC / 75VDC
MAX CURRENT: 4A

APPLICATION:

INGRESS PROTECTION RATING IS IP67 (MATED)

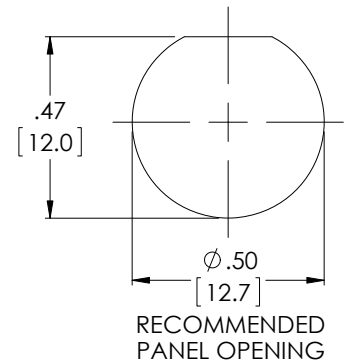
ENVIRONMENTAL:


OPERATING TEMPERATURE RANGE: -25°C TO +90°C

MISCELLANEOUS:

STRIP DIMENSIONS SHOWN ARE FOR REFERENCE ONLY AND MAY VARY.
MINIMUM LABEL INFO INCLUDES PART NUMBER, DATE CODE, VOLTAGE AND AMPERAGE.
CABLE ASSEMBLIES TO BE TESTED FOR CONTINUITY
CABLE ASSEMBLY SHALL BE INDIVIDUALLY PACKAGED IN ACCORDANCE WITH L-COM SPECIFICATION PS-0031.

WIRING MAP	
"P1"	COLOR
1	BROWN
3	BLUE
4	BLACK



<div>UNLESS OTHERWISE SPECIFIED, DIMENSIONS ARE IN INCHES [mm]</div> <div>OVERALL CABLE LENGTH TOLERANCE: ≤12 [305] = +1 [25] / -0 >12 [305] ≤60 [1524] = +2 [51] / -0 >60 [1524] ≤120 [3048] = +4 [102] / -0 >120 [3048] ≤300 [7620] = +6 [152] / -0 >300 [7620] = +5% / -0%</div> <div>ALL OTHER DIMENSIONAL TOLERANCES: .X = ±.2 [5.08] .XX = ±.02 [5.1] .XXX = ±.005 [13]</div>	APPROVALS	DATE	<div>L-com® Global Connectivity</div> <div>50 HIGH STREET NORTH ANDOVER, MA 01845</div>		
	DRAWN BY D. DESJARDIN	3/30/16	CATEGORY <div>TELECOM/MODULAR</div>		
	CHECKED BY D. FRISIELLO	4/11/16			
	APPROVED BY D. GUTTADAURO	4/20/16			
<div>PROJECTION</div> 	CONFIGURATION DETAILS OF UNDIMENSIONED FEATURES MAY VARY	PRODUCT DESCRIPTION <div>M83F FRONT IP67 24AWG PVC LEADS</div>			
	COLOR VARIATIONS MAY OCCUR	SIZE <div>A</div>	FSCM NO. <div>43321</div>	DWG. NO. <div>REC-M83FF-LEADS</div>	REV. <div>A</div>
	SCALE: NONE CAD FILE: REC-M83FF-LEADS.SLDDRW SHEET 1 OF 1				