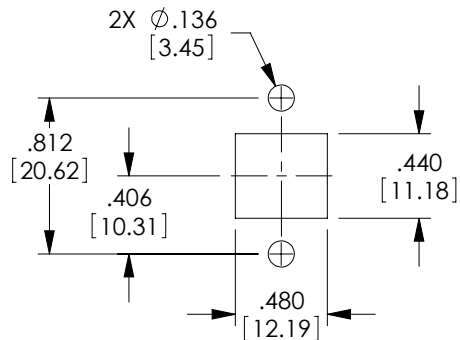
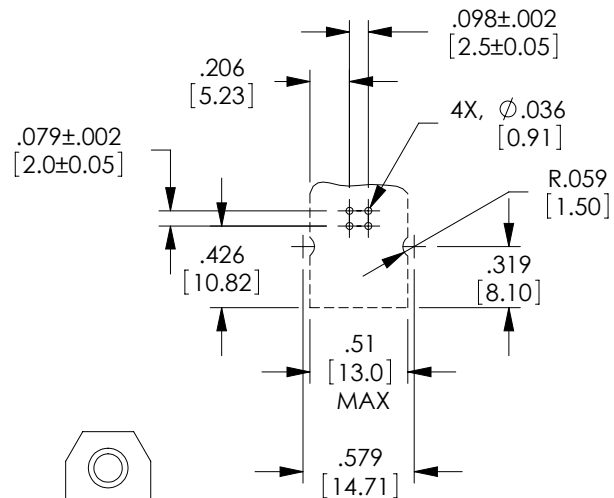
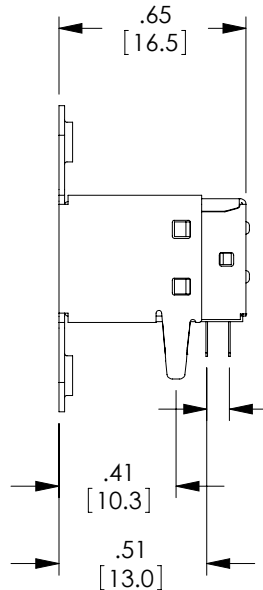
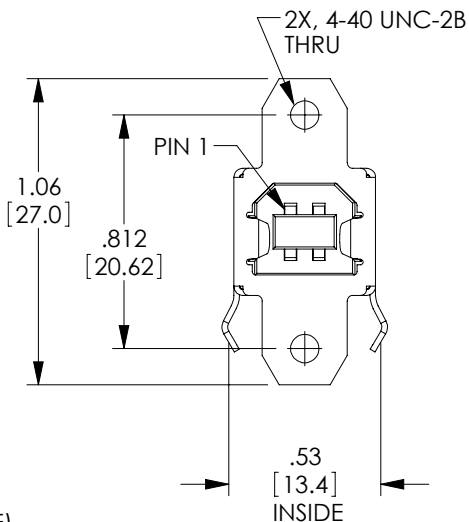
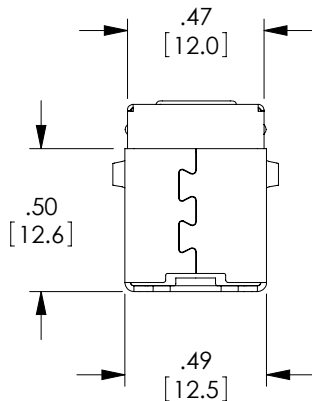


THE INFORMATION CONTAINED IN THIS DRAWING IS THE SOLE PROPERTY OF L-COM, INC. ANY REPRODUCTION IN PART OR WHOLE WITHOUT THE WRITTEN PERMISSION OF L-COM, INC. IS PROHIBITED.

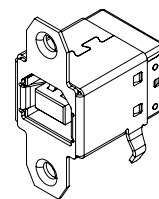
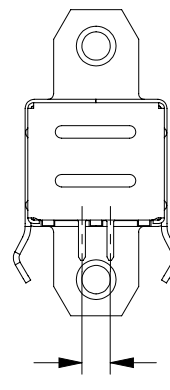
REVISIONS			
REV	DESCRIPTION	DATE	APPROVED
A	INITIAL RELEASE	12/16/11	D.GRIFFIN



RECOMMENDED  
PANEL CUTOUT



RECOMMENDED  
PCB CUTOUT



#### NOTES:

MATERIAL:  
CONTACTS: BRASS  
INSULATOR: PBT, UL94V-0 RATED (WHITE)  
SHELL: BRASS

#### FINISH:

CONTACT: 30μ INCH SELECTIVE GOLD  
SHELL: NICKEL

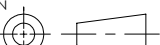

#### ELECTRICAL CHARACTERISTICS:

CONTACT CURRENT RATING: 1.5 AMPERES.  
DIELECTRIC WITHSTANDING VOLTAGE: AC 500V R.M.S.  
INSULATION RESISTANCE: 1000 MEGOHMS MINIMUM  
CONTACT RESISTANCE: 30 MILLIOHMS MAXIMUM  
OPERATING TEMPERATURE: -55°C +85°C.

ALL DIMENSIONS ARE FOR REFERENCE ONLY.

COMPONENT SHALL BE PACKAGED IN QUANTITY OF 10 PER BAG  
IN ACCORDANCE WITH L-COM SPECIFICATION PS-0031.

**RoHS Compliant** ✓

UNLESS OTHERWISE SPECIFIED, DIMENSIONS ARE IN INCHES [mm]  OVERALL CABLE LENGTH TOLERANCE: ≤12 [305] = +1 [25] / -0 >12 [305] ≤60 [1524] = +2 [51] / -0 >60 [1524] ≤120 [3048] = +4 [102] / -0 >120 [3048] ≤300 [7620] = +6 [152] / -0 >300 [7620] = +3% / -0%  ALL OTHER DIMENSIONAL TOLERANCES: .X = ±.2 .XX = ±.02 .XXX = ±.005  PROJECTION 	APPROVALS	DATE	 Global Connectivity 45 BEECHWOOD DRIVE NORTH ANDOVER, MA 01845	
	DRAWN BY D.FRISIELLO	11/30/11		
	CHECKED BY D.PARHAM	11/30/11	CATEGORY	
	APPROVED BY S.SMITH	11/30/11	USB	
CONFIGURATION DETAILS OF UNDIMENSIONED FEATURES MAY VARY  COLOR VARIATIONS MAY OCCUR	PRODUCT DESCRIPTION			
	USB TYPE "B" CONNECTOR WITH FLANGE			
	SIZE <b>A</b>	FSCM NO. <b>43321</b>	DWG. NO. <b>UC-B-PMT</b>	REV. <b>A</b>
SCALE: NONE		CAD FILE: UC-B-PMT.SLDDRW		SHEET 1 OF 1