

## HyperLink Wireless 2.4 GHz 20 dBi 90 Degree Sector Panel Wireless LAN Antenna Model: HG2420P-090 (Now ANATEL® APPROVED)

### Applications and Features

#### Applications:

- 2.4 GHz ISM Band
- IEEE 802.11b and 802.11g Wireless LAN
- Bluetooth®
- Public Wireless Hotspot
- WiFi
- Wireless Video Systems
- Wireless Internet Provider "cell" sites

#### Features:



- Superior performance
- All weather operation
- 90° beam-width
- 20° Down-Tilt Mounting Bracket
- Includes Mast Mounting Hardware
- Integral N-Female Connector
- RoHS Compliant



### Description

#### Superior Performance

The HyperGain® HG2420P-090 Sector Panel WiFi Antenna combines very high gain with a wide 90° beam-width. It is a professional quality "cell site" antenna designed primarily for service providers in the 2.4GHz ISM band. Applications include IEEE 802.11b and 802.11g wireless LAN systems.

#### ANATEL®APPROVED

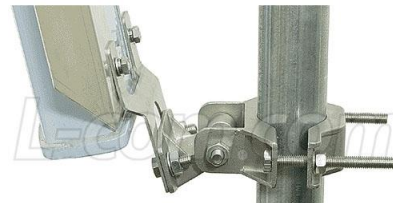
This antenna has been homologated (tested) in Brazil and is ANATEL® APPROVED for all installations in Brazil. This is another antenna in a series of L-com antennas certified for installation and use throughout Brazil.

#### Rugged and Weatherproof

This antenna features a heavy-duty plastic radome for all-weather operation. The mounting system adjusts from 0 to 20 degrees down-tilt.

#### Ideal for Wireless Internet "Cell" Sites

This antenna is an ideal choice for Wireless Internet Provider "cell" sites since the cell size can be easily determined by adjusting the down-tilt angle. Horizontal coverage is a full 90 degrees, and side-radiation is minimized by the heavy-duty aluminum reflector.



## Specifications

### Electrical Specifications

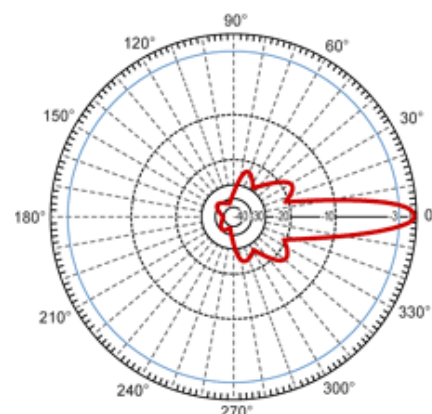
<b>Frequency</b>	2400-2500 MHz
<b>Gain</b>	20 dBi
<b>Horizontal Beam Width</b>	90 degrees
<b>Vertical Beam Width</b>	+/- 5°
<b>Impedance</b>	50 Ohm
<b>Max. Input Power</b>	250 Watts
<b>VSWR</b>	< 1.3:1 avg.
<b>Connector</b>	N Female
<b>Lightning Protection</b>	DC Short

### Mechanical Specifications

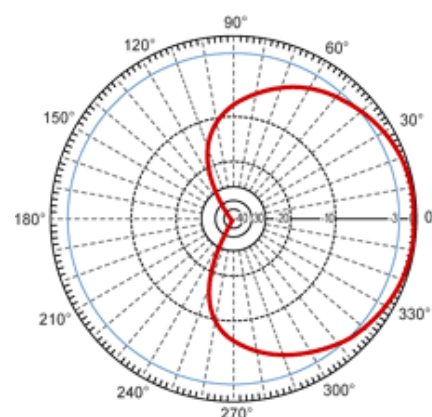
<b>Weight</b>	12 lbs. (5.44 Kg)
<b>Dimensions</b>	39 x 9 x 2.5 inches (99 x 22.9 x 6.4 cm)
<b>Radome Material</b>	UV-Inhibited Polymer
<b>Reflector Material</b>	Aluminum
<b>Operating Temperature</b>	-40° C to 85° C (-40° F to 185° F)
<b>Mounting</b>	2 inch (5 cm) O.D. pipe max.
<b>Polarization</b>	Vertical
<b>Downtilt (mech)</b>	0 to 20 degrees (adjustable)
<b>Compliant</b>	ANATEL® and RoHS

### Wind Loading Data

Wind Loading	Front Surface	Side Surface
<b>Area</b>	2.43 sq. ft. (.23 sq. meters)	0.68 (.06 sq. meters)
<b>@ 100 MPH (161 KPH)</b>	79 lbs. (35.8 Kg)	23 lbs.(10.4 Kg)



**Vertical**



**Horizontal**

### Guaranteed Quality

This product is backed by L-Com's Limited Warranty